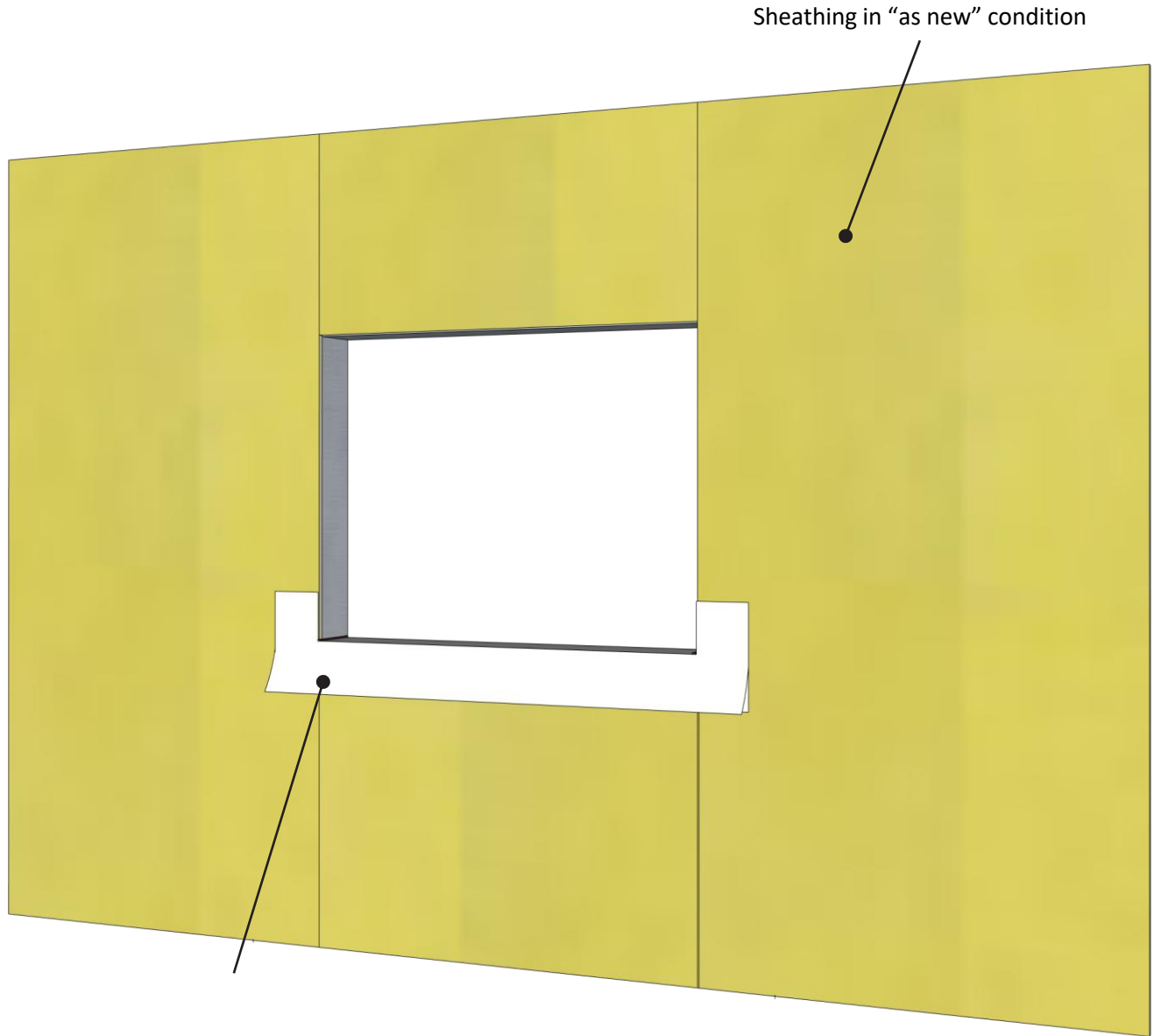


Step 1: Commercial Window RO Flashing System



VaproFlashing SA Self-Adhered properly shingled; applied directly to sheathing + folded 6" inside of R.O.

Note: Total of 12" of flashing should be used:

- 6" of flashing should be left on the face of the sheathing
- 6" of release film from the bottom of the flashing to be left attached for shingling over membrane.

BLOCKSHIELD™ SA
 FOR WALLS
VAPROFLASHING SA™

PRODUCT DESCRIPTION

BlockShield SA Plus is a self-adhered, non-asphaltic, high temperature, air/vapor barrier membrane

VaproFlashing SA is an air, water, and vapor barrier flashing with an aggressive pressure sensitive adhesive that does not require a primer

DISCLAIMER

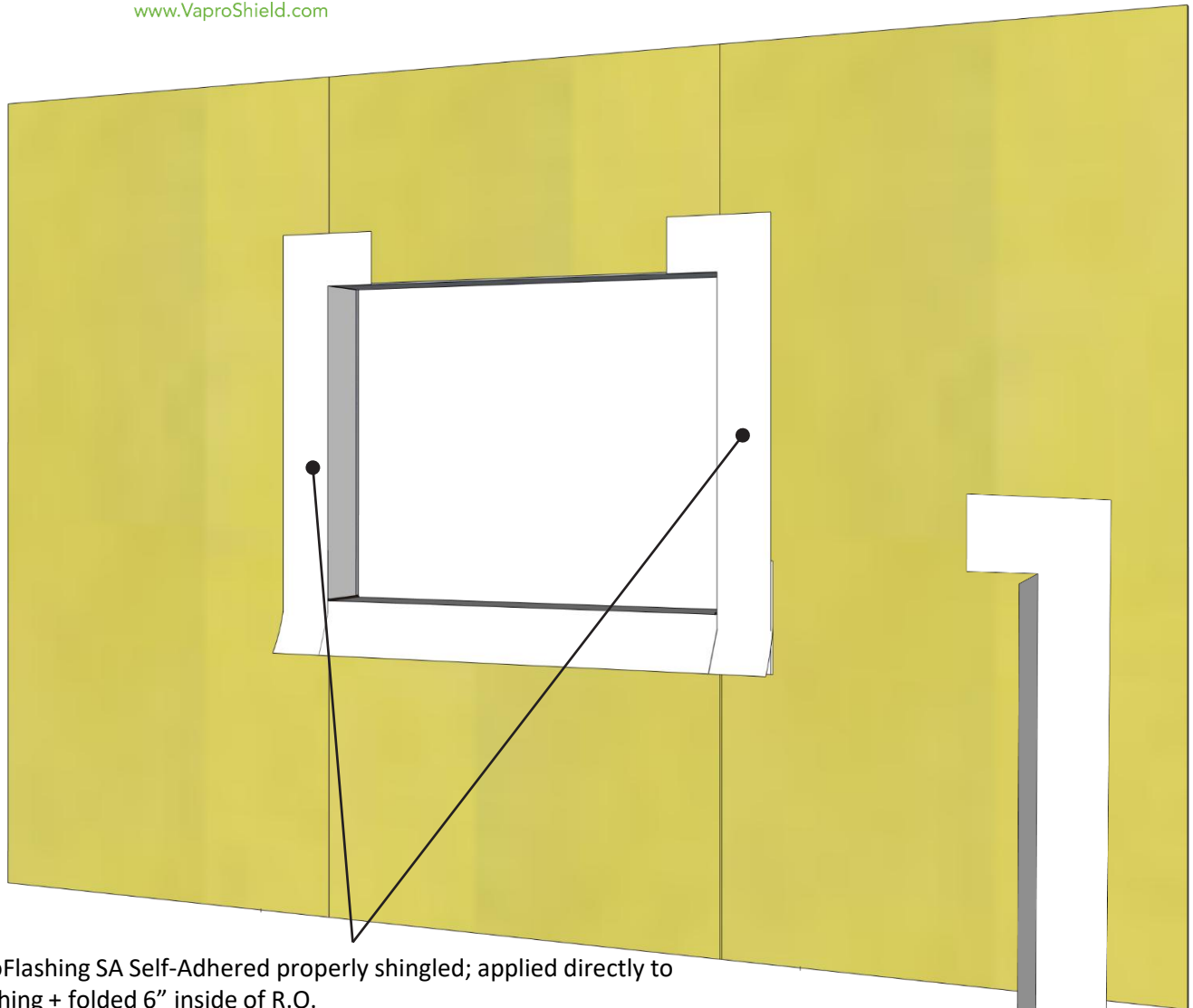
Detail sketch is generic, representing suggested best practices for VaproShield materials, and does not represent a specific job site condition and therefore may not be applicable to certain projects. Detail sketch is designed for use as a reference and must be approved by the designer/ consultant of record for each project prior to installation by the subcontractor. Changes and approvals of VaproShield details are the sole responsibility of the designer/consultant of record. VaproShield is **not** the designer of record for building enclosure details and takes no responsibility for the accuracy or interpretation of actual project site conditions.

DRAWN BY: AR

DATE: 6/2025

REF: 345

Always check www.VaproShield.com for the latest details and installation instructions



VaproFlashing SA Self-Adhered properly shingled; applied directly to sheathing + folded 6" inside of R.O.

Note: Total of 12" of flashing should be used:

- 6" of flashing should be left on the face of the sheathing
- 6" of release film from the bottom of the flashing to be left attached for shingling over membrane.

Note: bottom horizontal flaps of flashing can be trimmed off

BLOCKSHIELD™ SA
 FOR WALLS

VAPROFLASHING SA™

PRODUCT DESCRIPTION

BlockShield SA Plus is a self-adhered, non-asphaltic, high temperature, air/vapor barrier membrane

VaproFlashing SA is an air, water, and vapor barrier flashing with an aggressive pressure sensitive adhesive that does not require a primer

DISCLAIMER

Detail sketch is generic, representing suggested best practices for VaproShield materials, and does not represent a specific job site condition and therefore may not be applicable to certain projects. Detail sketch is designed for use as a reference and must be approved by the designer/consultant of record for each project prior to installation by the subcontractor. Changes and approvals of VaproShield details are the sole responsibility of the designer/consultant of record. VaproShield is **not** the designer of record for building enclosure details and takes no responsibility for the accuracy or interpretation of actual project site conditions.

DRAWN BY: AR

DATE: 3/2025

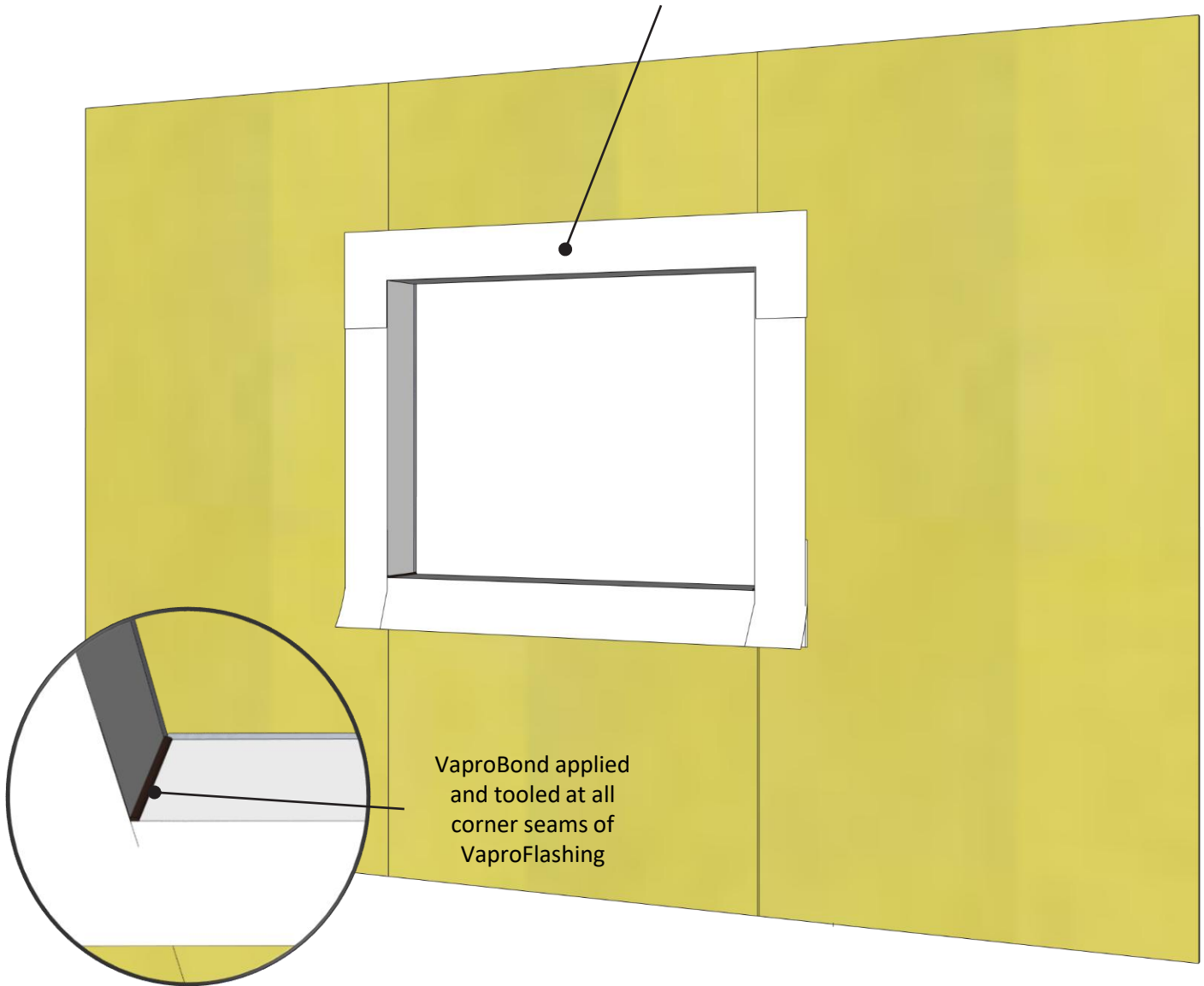
REF: 345

Always check www.VaproShield.com for the latest details and installation instructions

VaproFlashing SA Self-Adhered properly shingled; applied directly to sheathing + folded 6" inside of R.O.

Note: Total of 12" of flashing should be used:

- 6" of flashing should be left on the face of the sheathing



BLOCKSHIELD™ SA
 FOR WALLS
VAPROFLASHING SA™

PRODUCT DESCRIPTION

BlockShield SA Plus is a self-adhered, non-asphaltic, high temperature, air/vapor barrier membrane

VaproFlashing SA is an air, water, and vapor barrier flashing with an aggressive pressure sensitive adhesive that does not require a primer

DISCLAIMER

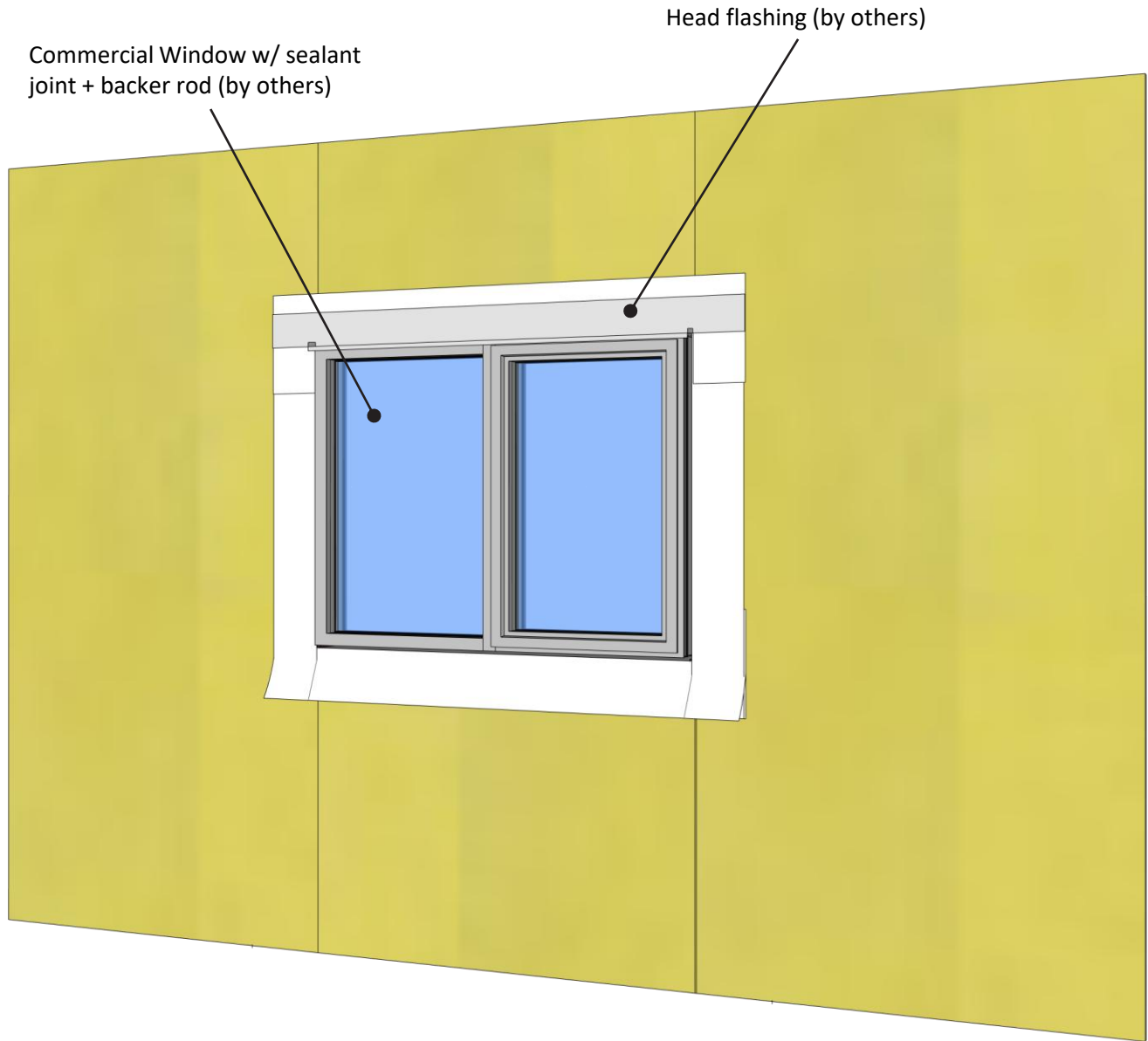
Detail sketch is generic, representing suggested best practices for VaproShield materials, and does not represent a specific job site condition and therefore may not be applicable to certain projects. Detail sketch is designed for use as a reference and must be approved by the designer/ consultant of record for each project prior to installation by the subcontractor. Changes and approvals of VaproShield details are the sole responsibility of the designer/consultant of record. VaproShield is **not** the designer of record for building enclosure details and takes no responsibility for the accuracy or interpretation of actual project site conditions.

DRAWN BY: AR

DATE: 3/2025

REF: 345

Always check www.VaproShield.com for the latest details and installation instructions



BLOCKSHIELD™ SA
 FOR WALLS

VAPROFLASHING SA™

PRODUCT DESCRIPTION

BlockShield SA Plus is a self-adhered, non-asphaltic, high temperature, air/vapor barrier membrane

VaproFlashing SA is an air, water, and vapor barrier flashing with an aggressive pressure sensitive adhesive that does not require a primer

DISCLAIMER

Detail sketch is generic, representing suggested best practices for VaproShield materials, and does not represent a specific job site condition and therefore may not be applicable to certain projects. Detail sketch is designed for use as a reference and must be approved by the designer/ consultant of record for each project prior to installation by the subcontractor. Changes and approvals of VaproShield details are the sole responsibility of the designer/consultant of record. VaproShield is **not** the designer of record for building enclosure details and takes no responsibility for the accuracy or interpretation of actual project site conditions.

DRAWN BY: AR

DATE: 3/2025

REF: 345

Always check www.VaproShield.com for the latest details and installation instructions



BlockShield SA for Walls field membrane installed underneath 6" flap of VaproFlashing SA to create shingle effect

BLOCKSHIELD™ SA
 FOR WALLS
VAPROFLASHING SA™

DRAWN BY: AR

DATE: 3/2025

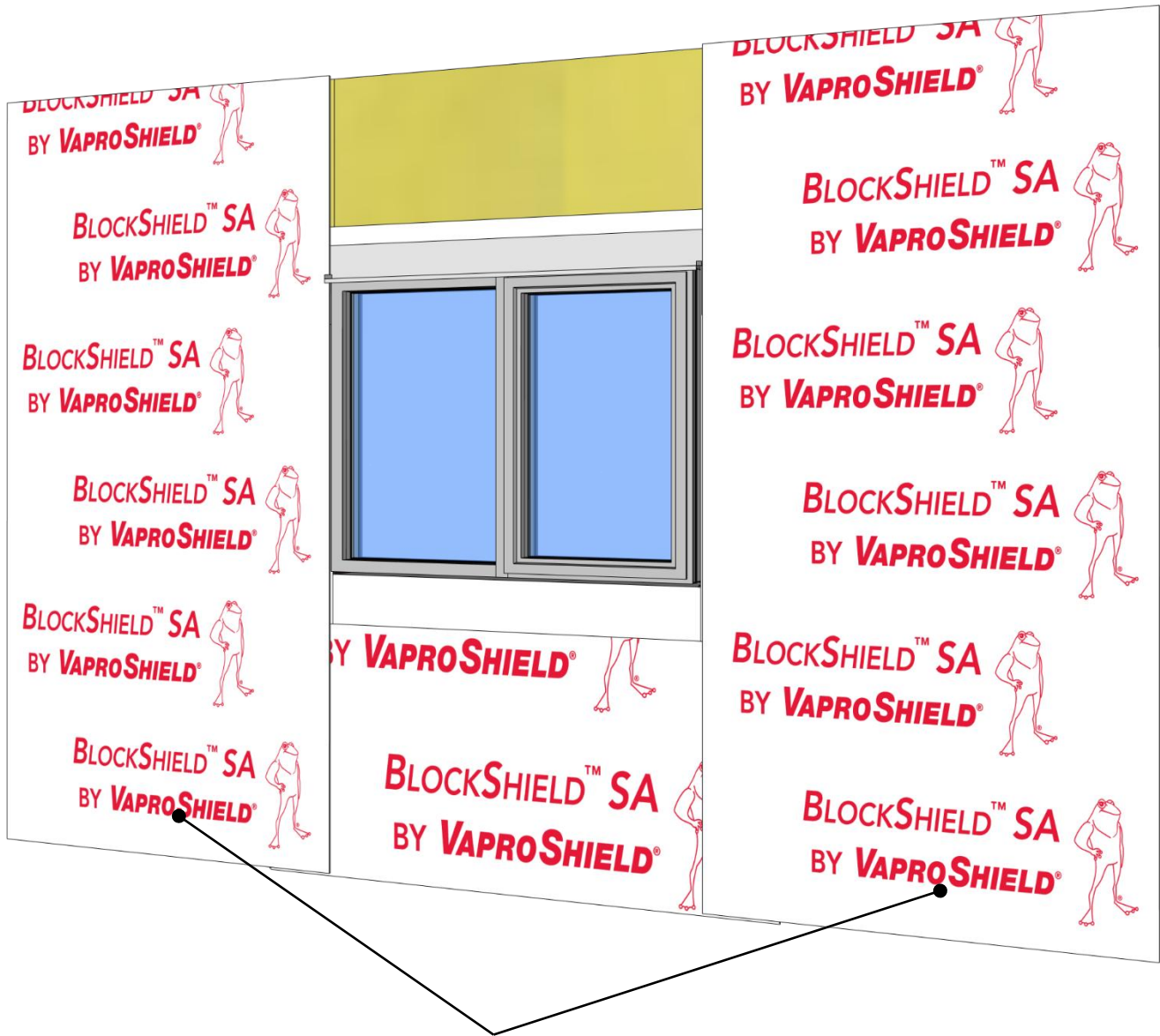
PRODUCT DESCRIPTION

BlockShield SA Plus is a self-adhered, non-asphaltic, high temperature, air/vapor barrier membrane

VaproFlashing SA is an air, water, and vapor barrier flashing with an aggressive pressure sensitive adhesive that does not require a primer

DISCLAIMER

Detail sketch is generic, representing suggested best practices for VaproShield materials, and does not represent a specific job site condition and therefore may not be applicable to certain projects. Detail sketch is designed for use as a reference and must be approved by the designer/ consultant of record for each project prior to installation by the subcontractor. Changes and approvals of VaproShield details are the sole responsibility of the designer/consultant of record. VaproShield is **not** the designer of record for building enclosure details and takes no responsibility for the accuracy or interpretation of actual project site conditions.



BlockShield SA for Walls field membrane installed with minimum 3" overlap

BLOCKSHIELD™ SA
 FOR WALLS

VAPROFLASHING SA™

PRODUCT DESCRIPTION

BlockShield SA Plus is a self-adhered, non-asphaltic, high temperature, air/vapor barrier membrane

VaproFlashing SA is an air, water, and vapor barrier flashing with an aggressive pressure sensitive adhesive that does not require a primer

DISCLAIMER

Detail sketch is generic, representing suggested best practices for VaproShield materials, and does not represent a specific job site condition and therefore may not be applicable to certain projects. Detail sketch is designed for use as a reference and must be approved by the designer/consultant of record for each project prior to installation by the subcontractor. Changes and approvals of VaproShield details are the sole responsibility of the designer/consultant of record. VaproShield is **not** the designer of record for building enclosure details and takes no responsibility for the accuracy or interpretation of actual project site conditions.

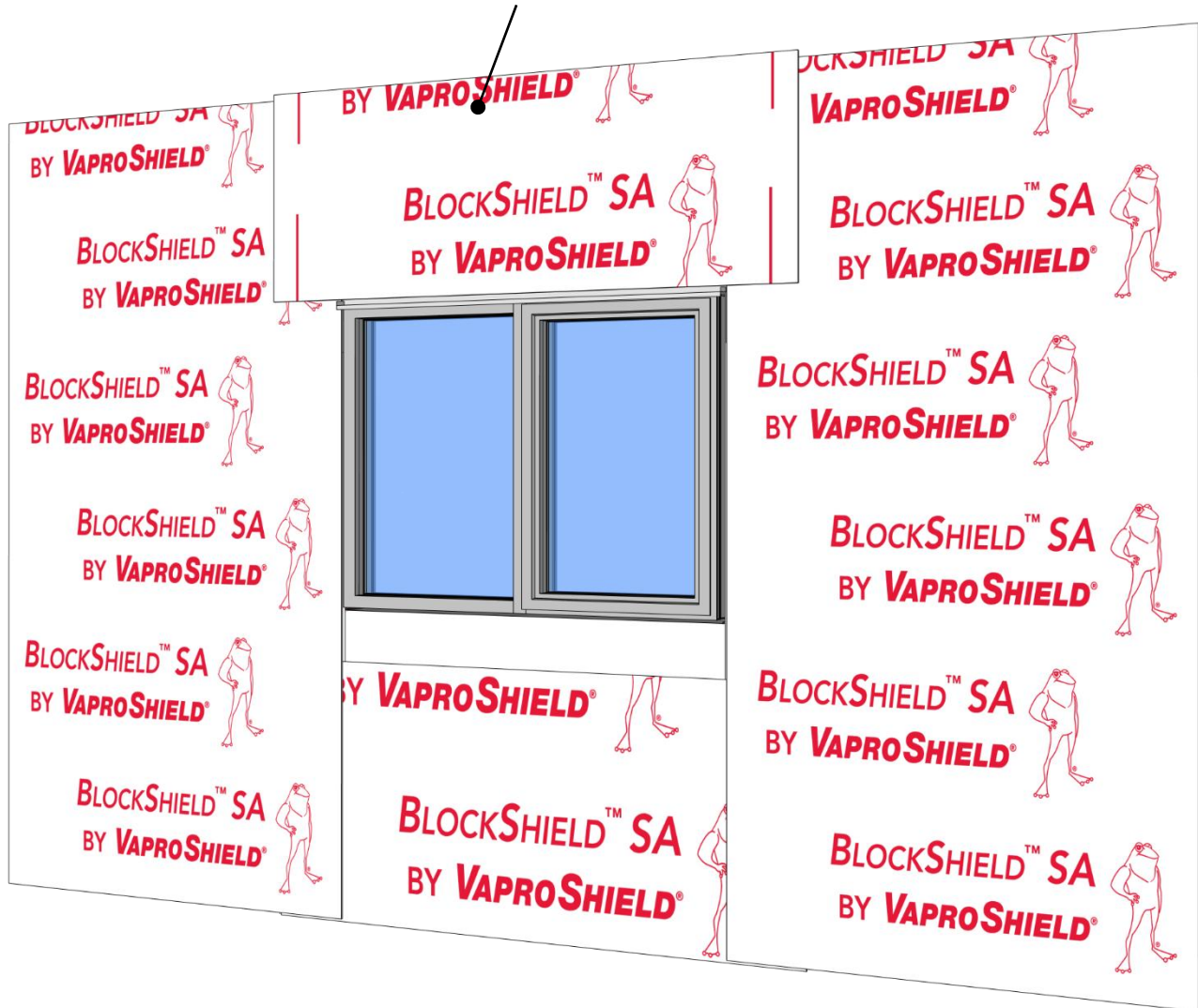
DRAWN BY: AR

DATE: 3/2025

REF: 345

Always check www.VaproShield.com for the latest details and installation instructions

BlockShield SA for Walls installed over head flashing and VaproFlashing SA



BLOCKSHIELD™ SA
FOR WALLS
VAPROFLASHING SA™

DRAWN BY: AR

DATE: 3/2025

PRODUCT DESCRIPTION

BlockShield SA Plus is a self-adhered, non-asphaltic, high temperature, air/vapor barrier membrane

VaproFlashing SA is an air, water, and vapor barrier flashing with an aggressive pressure sensitive adhesive that does not require a primer

DISCLAIMER

Detail sketch is generic, representing suggested best practices for VaproShield materials, and does not represent a specific job site condition and therefore may not be applicable to certain projects. Detail sketch is designed for use as a reference and must be approved by the designer/consultant of record for each project prior to installation by the subcontractor. Changes and approvals of VaproShield details are the sole responsibility of the designer/consultant of record. VaproShield is **not** the designer of record for building enclosure details and takes no responsibility for the accuracy or interpretation of actual project site conditions.